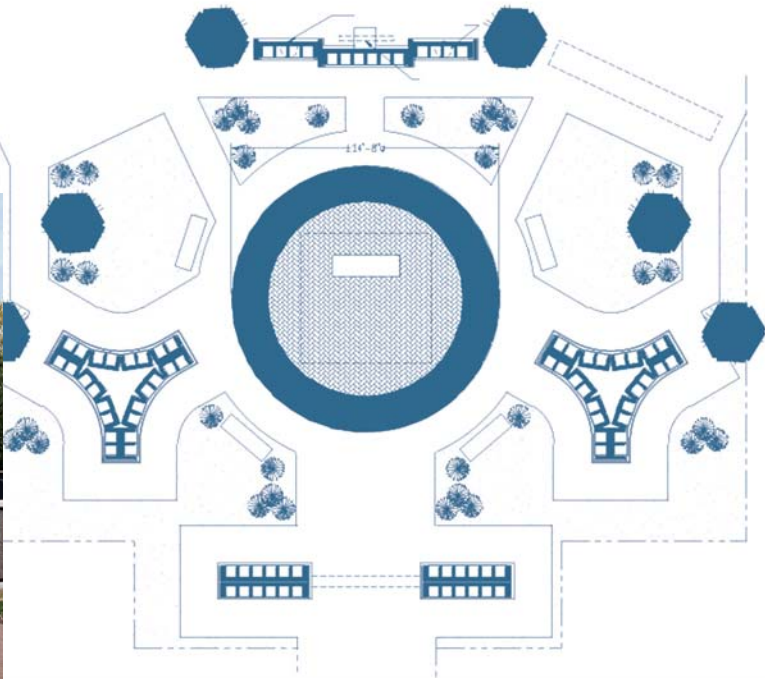


ST-VINCENT DE PAUL CEMETERY

The first of its kind, this columbarium garden project was designed and developed specifically for the magnificent 500,000 sq. ft. cemetery founded in 1897. Today, it features the largest columbarium garden in the greater Montreal area. The first phase including 192 niches was completed in 1995.



LAVAL



The second phase involving 244 niches and completed in August 2003, incorporated stunning garden landscaping; the area is open to visitors all year round. An inviting setting was created in the centre of the garden, where ceremonies can be held in peace and tranquility surrounded by the beauty of nature.

A third phase involving 244 niches is currently under construction and scheduled for completion in August 2004. Here, the garden of remembrance is designed for families, to bring them together in a common final resting place that is both beautiful and peaceful.

"When families visit, they are fascinated by the natural beauty of the surroundings." says Mr. André Audet, the cemetery's Manager. "The layout of our columbarium garden enables us to offer new and different solutions to today's families. They now have, within a catholic cemetery, a wide range of possibilities devoted to the soul's rest, to peace of mind and to quiet contemplation".



Your partner today in meeting the needs of tomorrow's families.

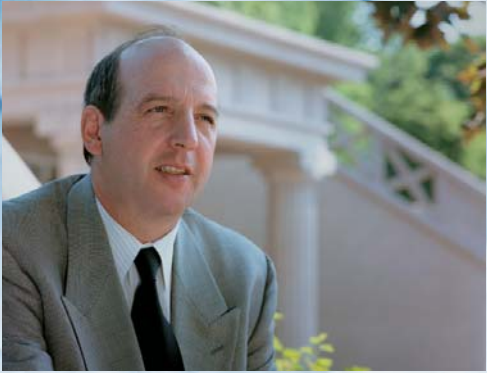


1.800.663.7954

www.mausoleum-cmc.com

The Bulletin

JULY 2004



Carrier Mausoleums Construction Inc. has been a leader in the death care industry for more than twenty years, designing and building distinctive mausoleums and columbariums.

Our principal objective is and always has been to meet and exceed our clients' needs while we strive to offer them innovative designs and marketing ideas to enable them to better meet the needs of the families they serve.

With the consumer's ever-changing need for new memorialization options and services, CMC has expanded

its portfolio of construction services to meet the challenge. We now offer expertise in design, construction and marketing services for multifunctional funeral centers, private family estates, cemetery service buildings, cemetery offices and cremation garden layouts. We also have a separate commercial construction division to better serve the needs of our North American clientele.

In this latest issue of our Bulletin, we are proud to highlight some of these new construction opportunities and innovative concepts.

Johnny Carrier
President



NORTH YORK

PADRE PIO MAUSOLEUM

In early 2004, Carrier Mausoleums Construction Inc. completed the Padre Pio Mausoleum at Westminster Cemetery in North York.

The unique 1,164-crypt addition involved the conversion of an older exterior mausoleum to a modern, enclosed, heated and air-conditioned building. A second storey was added to the early 1970's structure, as well as the enclosure of existing exterior crypts on the first floor to provide these crypt families with upgrades such as new carpeting, interior glass and marble front

niches as well as a grand entrance with a bright new glass façade.

The Mediterranean pinkish marble with sandblasted marble accent trims, the addition of numerous private family rooms and community crypt spaces on the ground floor achieved the desired transition from old architecture to new modern day trends design. The addition offered an enticing alternative for both heritage families and new crypt families for years to come.



Carrier Mausoleums
Construction Inc.

7575 Thimens Blvd.
Ville Saint-Laurent
Québec, Canada
H4S 2A2

T 1.800.663.7954

T 514.832.3733

F 514.832.0975

www.mausoleum-cmc.com

One step ahead of industry trends

Thanks to the many strategic alliances made with experienced partners over the years, CMC has gained unmatched and invaluable expertise in the field of “design-build”, an expertise that now benefits clientele in Canada as well as the United States.

From beginning to end of every project, CMC has always fostered close partnerships and a mutual feeling of confidence among owners, architects and teams of professionals. Creation, development, planning, realization, site selection... the project team evaluates each of these elements in light of the demands of today’s families, the direction of tomorrow’s trends as well as the commemoration rites and requirements of each cultural community.

The funeral complexes designed and built by CMC offer a wide range of services under one roof in order to provide families with a measure of timely comfort and reassurance. The multi-faceted nature of these memorial sites is achieved with the greatest respect for the client’s needs as well as for the financial realities of today’s management requirements.

From the conventional funeral home to the modern, multifunctional complex, contemporary memorial sites offer a complete range of services in accordance with their vocations:

Family welcome

Counsellors’ offices, private rooms, daycare, showrooms, parking, etc.

Ceremonies and rituals

Chapel, viewing rooms, reception rooms, columbariums, mausoleums, cemeteries, etc.

Support Services

Professional services (psychologist, notary, etc.) thanatopraxy laboratory, administrative offices, caterer, etc.



Magnus Poirier Funeral Complex

Administered by Magnus Poirier Inc., this complex is situated in the southern sector of Le Repos St-François d’Assise Cemetery in Montreal.



St-François d’Assise Funeral Complex

Administered by Urgel Bourgie, this complex is situated in the northern sector of Le Repos St-François d’Assise Cemetery in Montreal.



Côte-des-Neiges Funeral Centre

Administered by Dignity Memorial Network, this complex is situated in the southern sector of Notre-Dame-des-Neiges Cemetery in Montreal.

Today’s funeral complexes are designed with great respect for architectural traditions and for the surrounding environment. Working closely with the cemetery’s administration, service sharing agreements are established with all parties involved, in order to offer the bereaved family a complete range of personalized services in a single setting. Theses alliances, coupled with a dedicated staff, allow us to provide all the support that is necessary for the bereavement process, to help the family while respecting their traditions.



MARKHAM

OFFICE & RECEPTION CENTRE CHRIST THE KING OFFICE CEMETERY

Catholic Cemeteries – Archdiocese of Toronto, contracted CMC to design and construct a state-of-the-art facility consisting of administrative offices, 5 family service rooms and 2 large family reception rooms. The 15,500 square foot building is currently under construction. It is also on schedule to be completed for the September 2004 official opening to include a mass and blessing by Cardinal Ambrozic, Archbishop of Toronto.

Christ the King Cemetery will be the first new Catholic cemetery to open in the Toronto Archdiocese in over 20 years. The 170 acre cemetery is to be developed in 3 distinct phases as demand dictates. Phase 1 consists of 60 acres for burial plus the new office/reception centre, an equipment services building and a converted historic farm house to be used by the grounds staff. CMC is also assisting with the construction of the services building and two prominent entrances to the cemetery. In future years, Phase 1 will also provide for the construction of a new mausoleum.

The office/reception centre has also been designed to incorporate a funeral home and chapel when the new provincial Cemeteries Act allowing funeral homes on cemetery property in the Province of Ontario, is proclaimed.